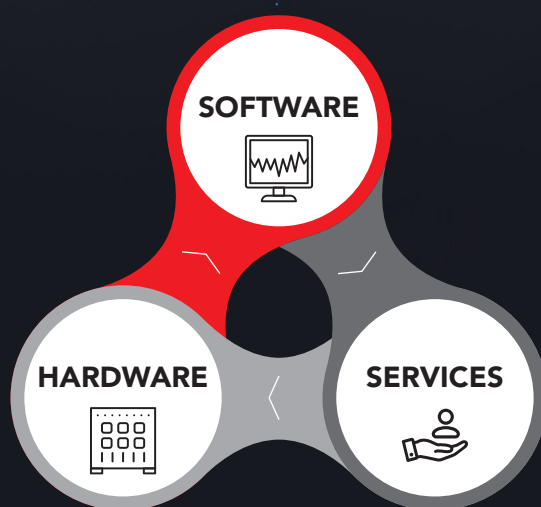




Software tools: comprehensive tools for mass spectra and time-domain transients processing and analysis

Hardware tools: add-on data acquisition systems to supercharge the performance of your Orbitrap™ and ICR instruments

Expert FTMS services: maximize your efficiency by leveraging our expertise – training, R&D, and contract protein analysis



Spectroswiss Sàrl | EPFL Innovation Park | 1015 Lausanne | Switzerland
Spectroswiss Inc. | 245 First Street | Riverview II | Cambridge, MA 02142 | USA
www.spectroswiss.ch

Hardware tools to access the unprocessed data in FTMS

Most Fourier transform mass spectrometers (FTMS) provide only processed and noise reduced data (mass spectra). Having access to the true raw data (FTMS time-domain transients) permits the most informative and efficient data processing possible. Our **FTMS Boosters**, compatible with all FTMS instruments on the market, enable time-domain transient acquisition and access to high quality unprocessed data. Combine them with our **Peak-by-Peak** software for advanced data processing and data analysis to take the full advantage of your FTMS platforms!

FTMS Booster X2T

For Orbitrap™ transient acquisition

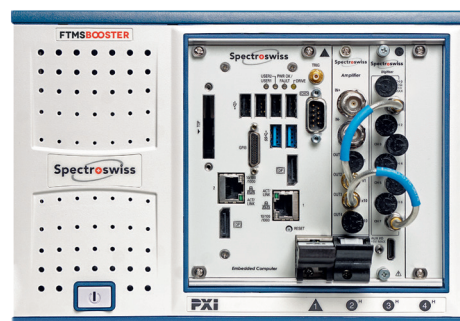
- Easy add-on to any Orbitrap™
- Works in parallel with the in-built data acquisition electronics
- Unlocks **absorption mode FT**
- Full transient detection for enhanced sensitivity, (ultra-high) resolution, and duty cycle
- Patented technology to maximize sensitivity through simultaneous acquisition of low/high gain transients
- Detection of ion signals across the full m/z range
- **Thunderbolt** technology for rapid data transfer
- Option: stand-alone **workstation** with powerful data processing and data storage capabilities



FTMS Booster X2

For Orbitrap™ transient acquisition

- Easy add-on to any Orbitrap™
- All capabilities of FTMS Booster X2T technology
- Rugged single-chassis system, small footprint
- High-capacity (4TB) fast SSD buffer



FTMS Booster X3

For FT-ICR MS transient acquisition

- All capabilities of FTMS Booster X2 technology
- Easy add-on to any FT-ICR MS instrument, as well as any Orbitrap™ FTMS instrument
- Acquisition of both excite and detect waveforms in FT-ICR MS
- Uniquely enables in-hardware absorption mode FT (aFT) for FT-ICR MS
- Powerful on-board data processing
- High-capacity (16 TB) fast SSD buffer for extended duration measurement campaigns



Software tools for data processing and analysis

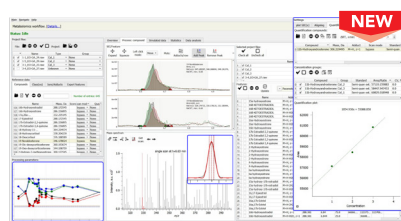
Spectroswiss software solutions provide a step-change in mass spectrometry data quality and processing sophistication, helping you to take on the most complex and challenging applications. Our computationally-efficient tools are capable of processing large datasets, whether these are unreduced data (time-domain transients and absorption mode FT, or aFT, mass spectra) or reduced data (e.g., full and reduced profile enhanced FT, or eFT, and magnitude mode FT, or mFT, mass spectra). Our application-specific workflows enable step-by-step data processing and analysis, giving you the powerful tools to comprehensively investigate your samples.

ADVANCED MODULAR SOFTWARE

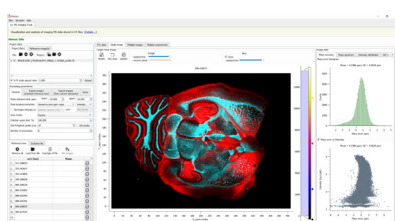
PEAKBYPEAK

Peak-by-Peak suite: a powerful set of computational modules to process time-domain transients or mass spectra. Available in Base and Expert Editions.

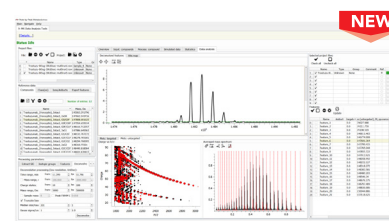
WORKFLOWS



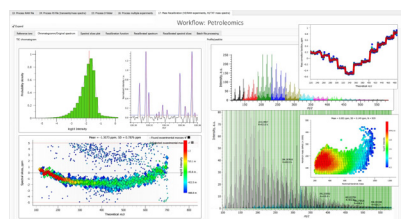
**Quantitative
Metabolomics & Lipidomics**



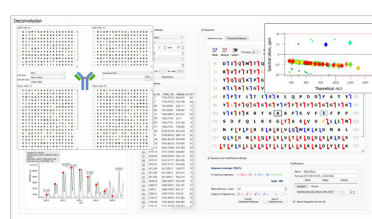
**MALDI & DESI
Imaging**



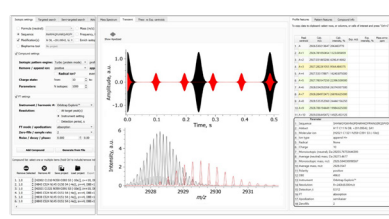
**Protein Analysis
(BioPharma)**



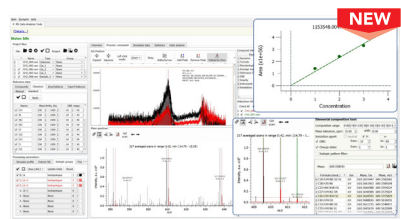
**Complex
Mixture Analysis**



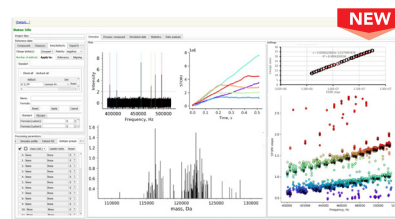
**Top-Down & Middle-Down
Analysis**



**FTMS Simulator
(Protein-grade!)**



**Quantitative LC/GC-MS analysis
of Compound Classes**



**CDMS:
Individual Ion Counting**



**Custom
Workflows**

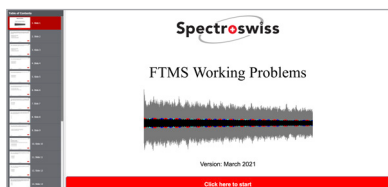
KEY FEATURES

- step-by-step workflows for advanced processing and analysis of mass spectrometry data
- **vendor-neutral** approach, featuring a direct data import of major vendor and open-source file types
- support of reduced and unreduced data, including full profile mass spectra and time-domain transients
- baseline correction, noise thresholding, peak picking, m/z & time aligning, normalization, & mass re-calibration
- accurate simulation of isotopic envelopes and mass spectra for small and large (proteins, viruses) molecules
- targeted deconvolution and untargeted low-resolution (UniDec) and high-resolution (Hardklor) deconvolution
- targeted experimental data search and annotation with simulated centroid and profile isotopic envelopes
- quantification of compounds (absolute quantification, semi-quantification, standard addition)
- parallel computing on multiple CPU-cores and GPUs for fast data processing
- powerful and memory-efficient handling of (very) large datasets

Services to support your research & training

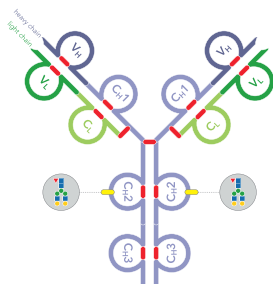
We offer a range of consulting, on-line and in-person training courses, and CRO services. Utilizing our in-depth expertise and industry-leading know-how, and equipped with our advanced software and hardware tools, we look forward to supporting you in your most challenging FTMS developments and applications.

FTMS EDUCATION & TRAINING



- In addition to our on-demand on-line training programs, we offer advanced studies and a short course on “FTMS Fundamentals and Data Processing”
- The Short Course teaches and discusses current best practices and knowledge in FTMS (with an emphasis on Orbitrap FTMS fundamentals and FTMS data processing)
- The Course program mixes lectures, practical workshops, and hands-on problem solving
- The Course is designed for FTMS end-users in academic and industrial analytical departments. It is best suited for small groups (5-20 participants). On-site and On-line options are available

CRO SERVICES FOR PROTEIN (ANTIBODIES) ANALYSIS



- Advanced and proprietary mass spectrometry solutions for mAb analysis, including complex multi-specific mAbs and ADCs/AOCs
- Superior quality data due to our proprietary methods and techniques for Orbitrap FTMS, powered by our custom biopharma software tools
- Integration of intact mass, middle-up, middle-down, top-down, and bottom-up mass spectrometry approaches
- Personalized follow-up and dedicated customer support

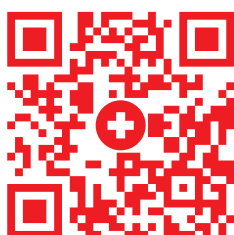
FTMS INSTRUMENT & WORKFLOW DIAGNOSTICS



- Identify the strengths and limitations of your FTMS platforms
- Understand millisecond-timescale logistics of your experiments
- Explore ultra-high resolution capabilities
- Improve and expand your workflows
- Advance your most challenging applications

COMPANY PROFILE

Spectroswiss is a 2014 spin-out from a Biomolecular Mass Spectrometry Laboratory at Ecole Polytechnique Fédérale de Lausanne (EPFL) in Switzerland. We provide software solutions for comprehensive data processing and data analysis in mass spectrometry, as well as advanced hardware for FTMS data acquisition. Capitalizing on our expertise in FTMS and proprietary advanced hardware and software solutions, we offer expert-level FTMS-related consulting, training, and CRO services. The company's headquarters are located in Lausanne, Switzerland and our US office is in Cambridge, MA. Welcome!



Spectroswiss

Spectroswiss Sàrl | EPFL Innovation Park | 1015 Lausanne | Switzerland
Spectroswiss Inc. | 245 First Street | Riverview II | Cambridge, MA 02142 | USA
www.spectroswiss.ch